

# LACEY TOWNSHIP

## PRESCHOOL EXPANSION

Information Session



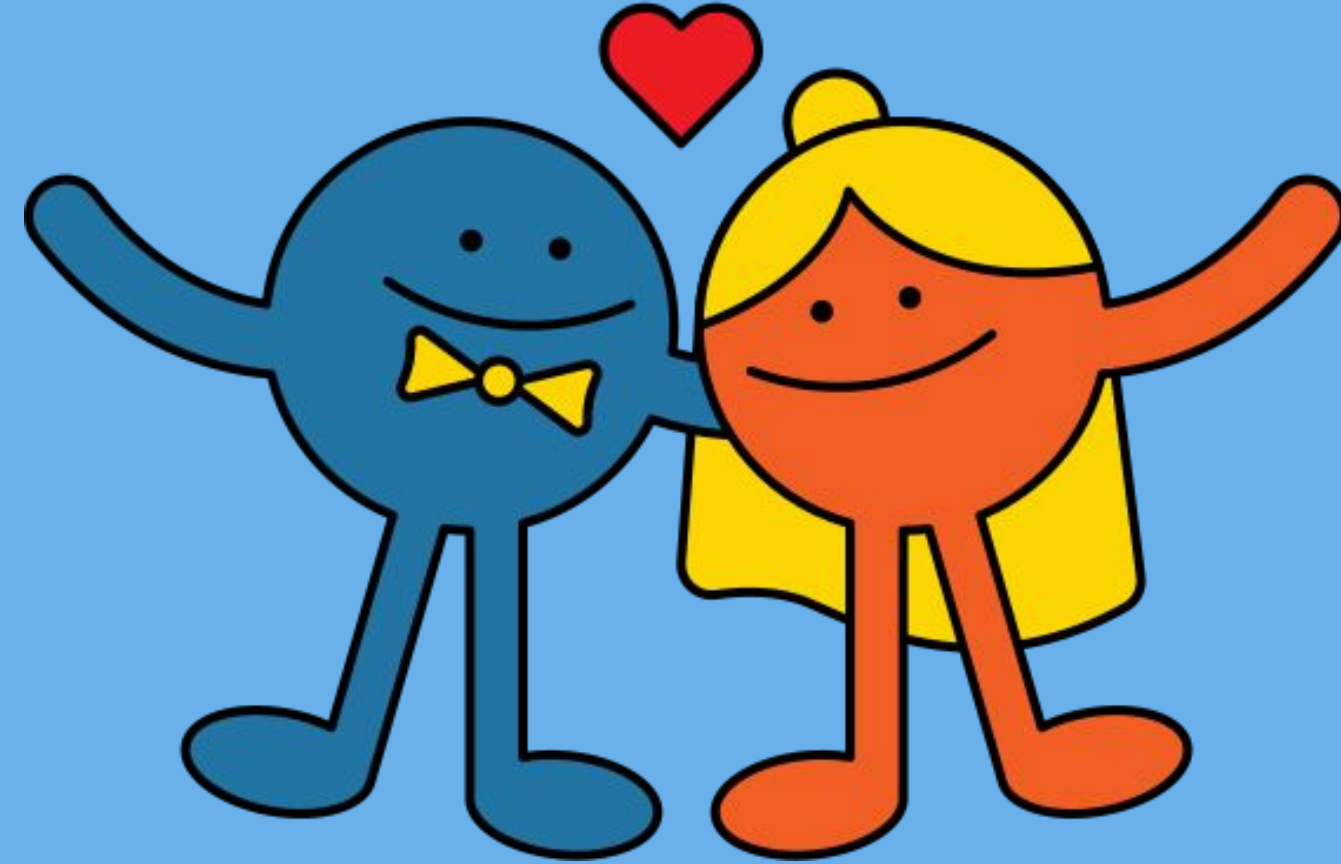
August 22, 2023



# History of Preschool

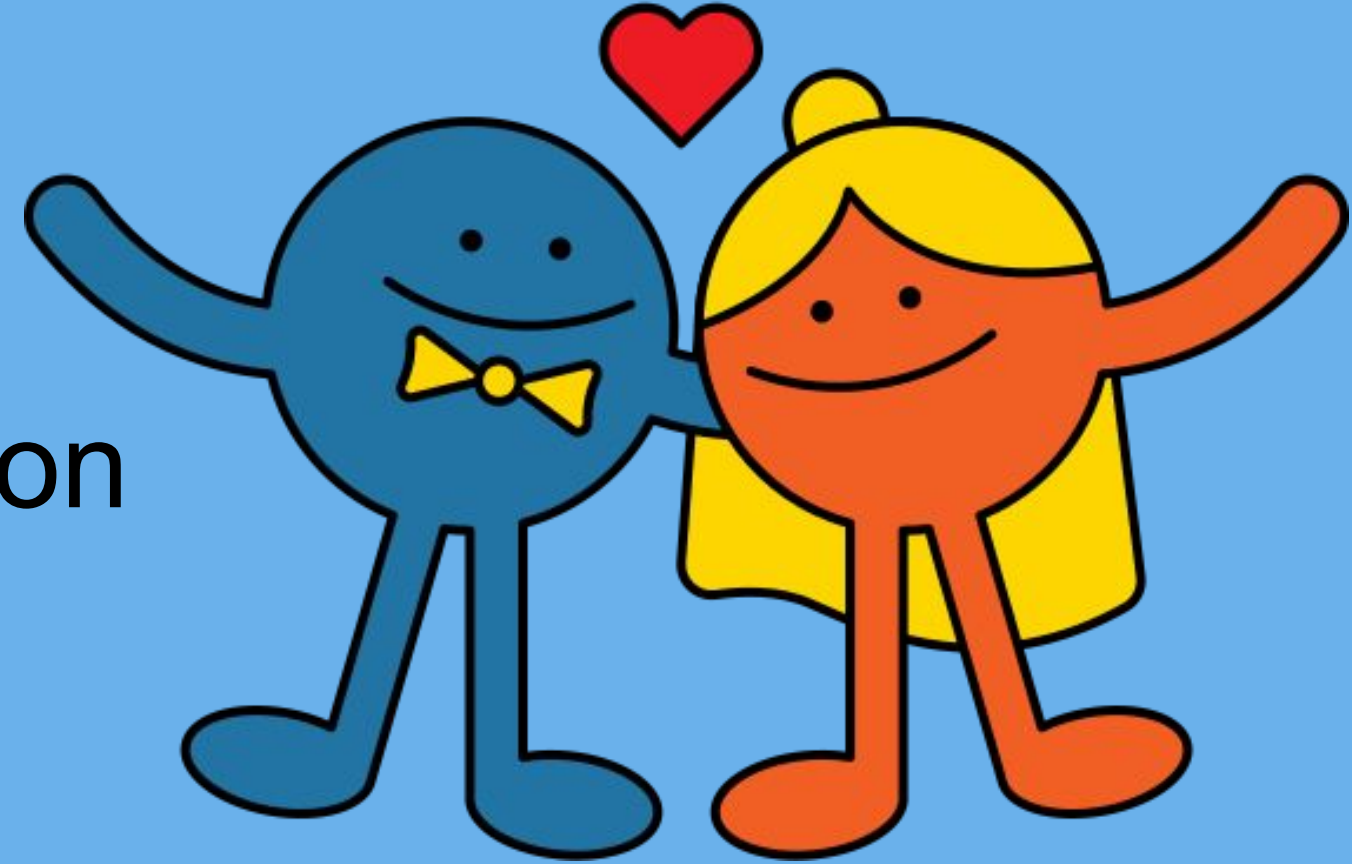
- Lacey has previously explored the PEA application
  - Square footage restrictions prevented the application.
- Currently Lacey maintains 9 preschool classrooms at MPS
  - 4 Communication & Learning Support- 5 hour program
  - 7 Preschool Disabled Classes (Half day sessions)
  - 3 Inclusion Classes- tuition based (Half day sessions)

Total current enrollment: 130 students



# Preschool Expansion Process

- July: 2023 NJDOE releases aid application
- August: 2023 Application is submitted
- September 2023: Aid acceptances are announced
- October - November 2023: Program rollout



# Current Status:

- Appropriate classroom space has been identified- Mill Pond School
- Formation of an Early Childhood Advisory Committee
- Currently drafting aid application based on previous application
- Visited with Local Daycare/Preschools
- Toured established PEA Programs\*:
  - Brick
  - Barnegat
  - Manchester
  - Berkeley



\*note: only Lacey and Toms River do not take advantage of preschool aid

# Early Childhood Advisory Committee

- Advisory group of community stakeholders interested in the education and welfare of children in preschool
- Review preschool program implementation of high-quality programs
- Serve as advisory support for the local school district preschool program and supports the transition as children move from preschool

**William Zylinski**  
Assistant  
Superintendent

**Michelle Amos**  
District Supervisor  
Elementary

**Mallory Krakovsky**  
Supervisor of Special Ed  
Pre-K-6

**Linda Downing**  
Board of Education  
President

**Emily Leary**  
School Psychologist

**Maria Valiante**  
Transportation Coordinator

**Joseph Raimo**  
Food Service Director

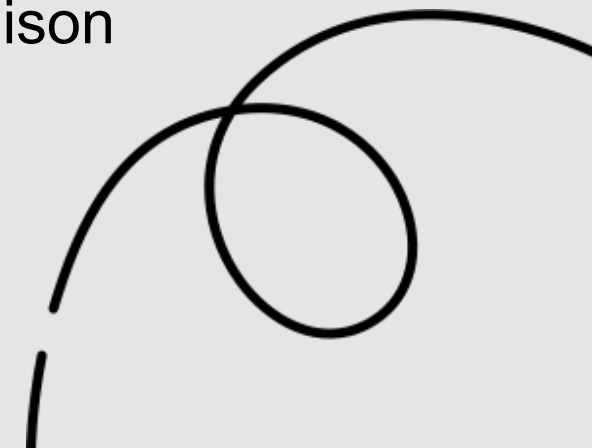
**Sharon Silva**  
Business Administrator

**John Smith**  
Facilities Manager

**Joanie Donohue**  
Mill Pond Principal

**Stephanie Danziger**  
Preschool Teacher

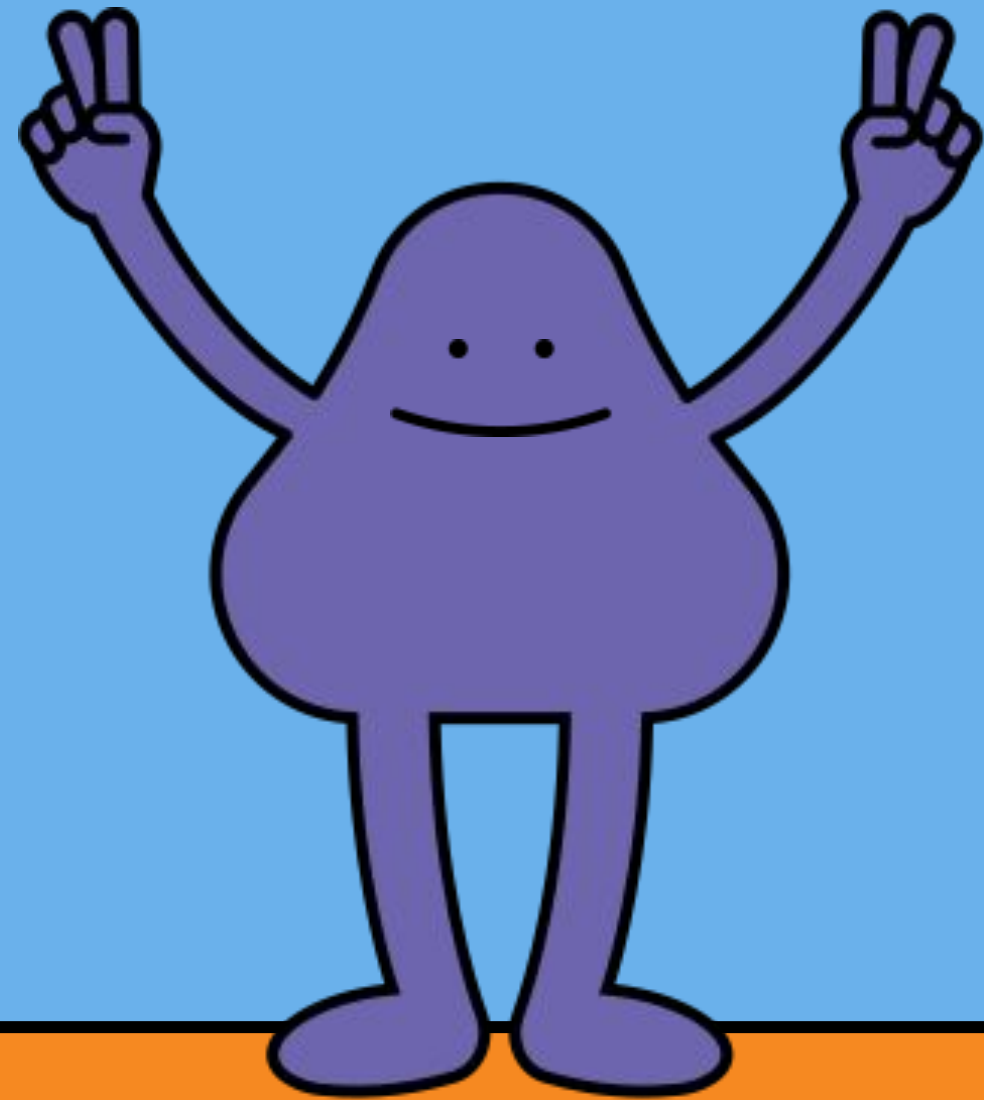
**Michelle Feeney**  
Parent Liaison



# Goals of PK Expansion

- All district 3 and 4 year-olds will have the opportunity to attend preschool
  - 385 is considered our full universe
  - 5 year required implementation timeline
- Curriculum is based in purposeful play and fostering self-regulation
- Provide district wide vertical articulation from preschool to kindergarten
- Allows for early identification of students with developmental delays
- All students will benefit from integrated programs
- Research shows students who attend preschool have improved outcomes in academic, behavioral, and social emotional growth





# Preschool Program

## ★ Mill Pond Elementary School

★ Five Days a Week

★ 6 Hours Per Day

★ No Cost

★ Transportation Offered

★ Before/After School Program-TBD

★ Breakfast and Lunch Offered

★ Gross Motor/Playground Time

★ Rest Time

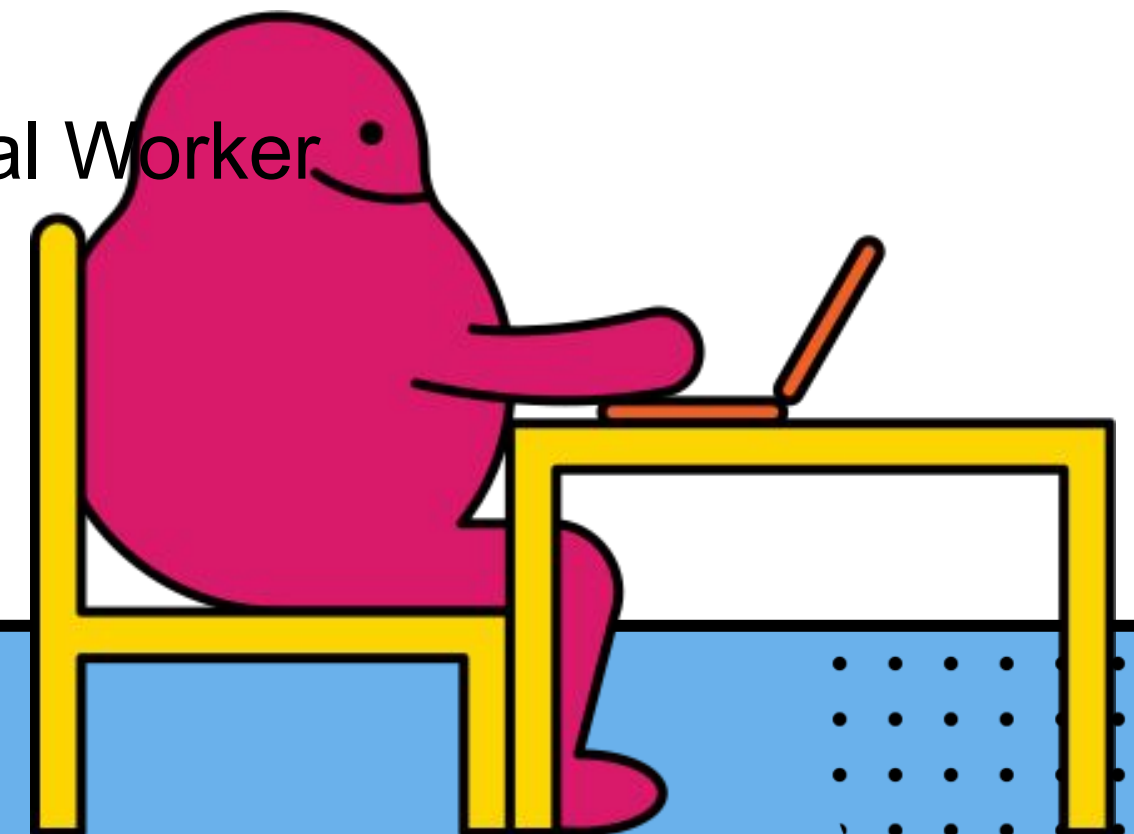
★ Potty-Trained Not Required but Recommended

★ 240 spots total

★ 40 reserved for low income residents

# Supports

- Preschool Director / Supervisor
- PIC- Preschool Instructional Coach
- PIRT - Preschool Intervention and Referral Team
  - Identify student's areas of struggle or weakness
  - Team will including parent that creates action plan with targeted interventions to assist teacher and student in identified area
- CPIS - Community Parent Involvement Specialist/Social Worker
  - Provide supports to student and families
  - Home to School Liaison
  - Early Childhood Advisory Council Chairperson







# Creative Curriculum

The Creative  
Curriculum®

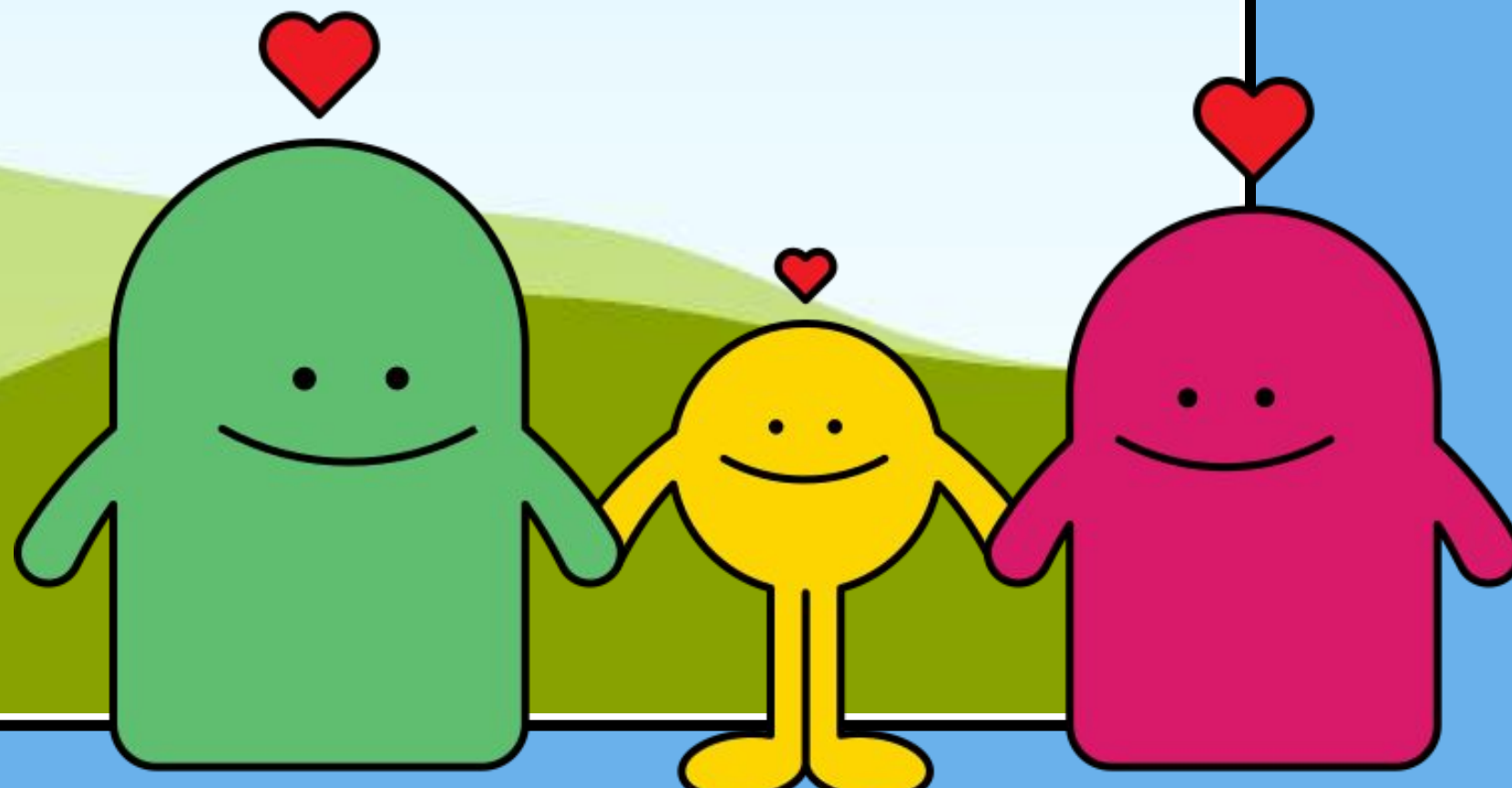


- Creative Curriculum is a New Jersey Dept of Education recognized curriculum. It is a study based curriculum where students participate in "hands-on," project-based investigations of topics that are relevant to children's everyday experiences.
- Studies are exciting and engaging. They tap into children's natural curiosity, resulting in a learning environment that is both fun and intentional.



## Transportation:

- Transportation will be provided to eligible students
- Stops may include local daycares for before/after care
- You can drive your child if you choose
- Buses will include a bus aide
- Start times are being developed



## Food Services:


Breakfast and lunch will be offered daily

Students can bring their own breakfast/lunch/snack

Children will eat in their classrooms

Free & reduced lunch will be available for eligible families

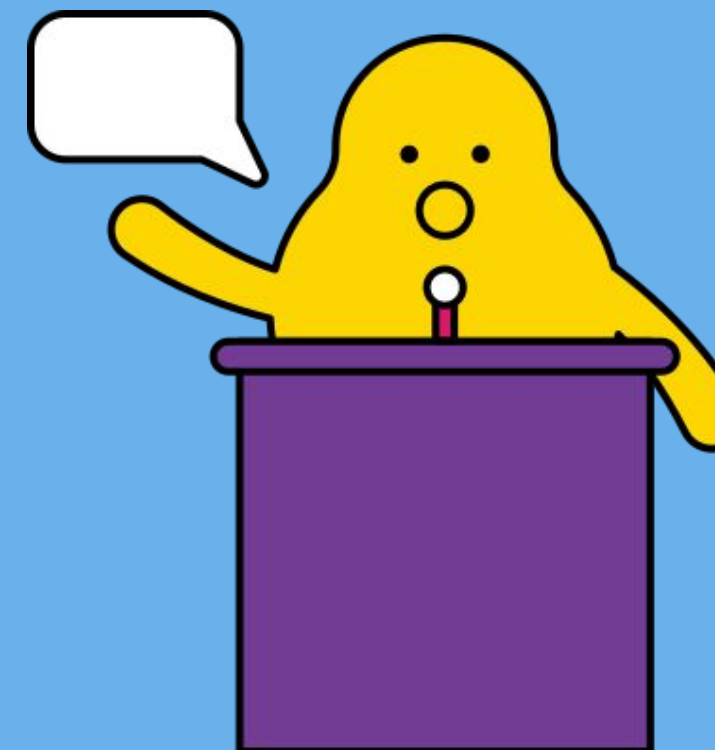
# Important Notes:

- Students who turn 3 by October 1, 2023 will be eligible for preschool
- Students who turns 5 on or before October 1, 2023 are not eligible for preschool; only eligible for kindergarten 

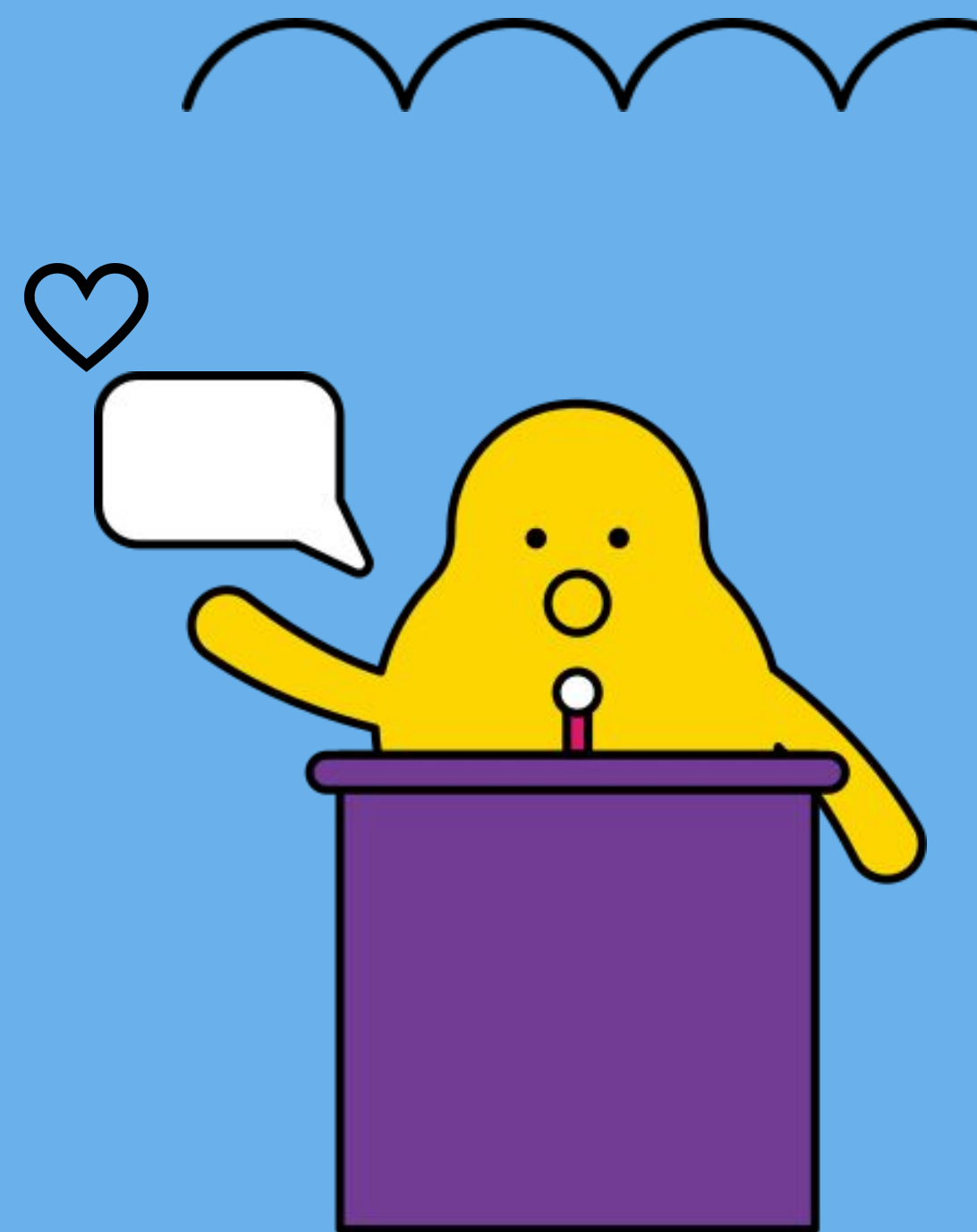
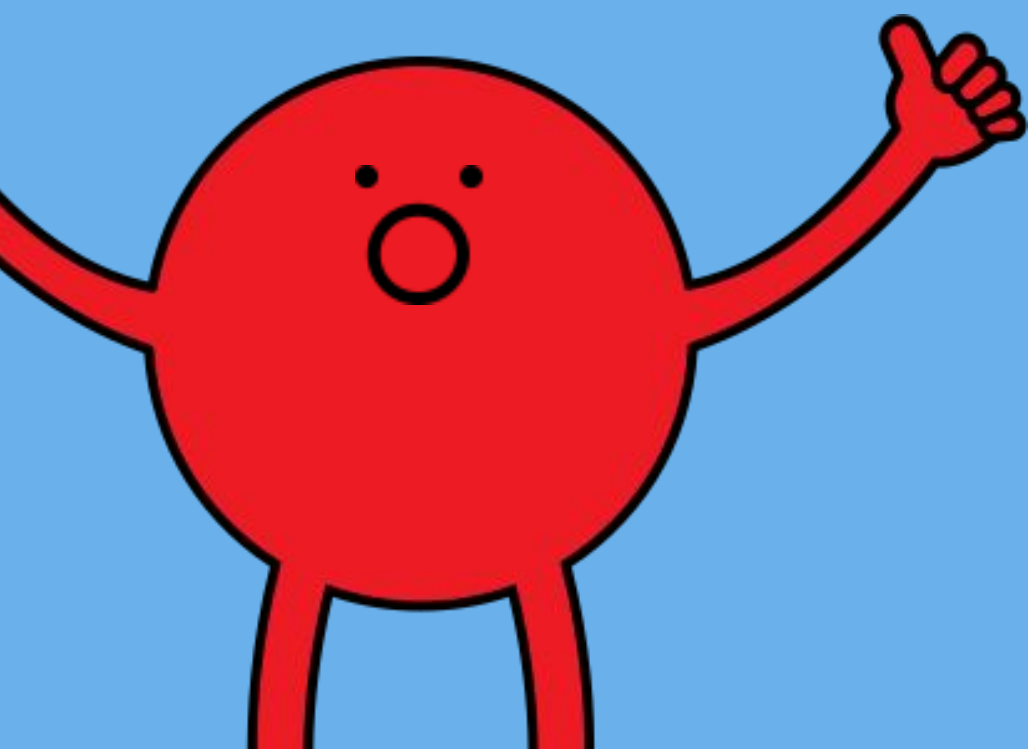
**PRE-REGISTRATION WILL OPEN ON MAY 23, 2023 at 10 a.m**

**ACCESS ONLINE AT [LACEYSCHOOLS.ORG](https://lacey.k12.wa.us)**

**Mill Pond Annex will be available for families who require internet access starting at 10 a.m.**



**What does the PEA-  
Preschool Expansion  
Aid mean for Special  
Education students?**



# SEPTEMBER

**PSD** Preschool Disabled Students programming will remain the same. Students will attend either an AM 9:15-11:45 or PM 12:45-3:15 (2.5 hour sessions).

**CLS**- Communication, Learning & Support students will have an increased program in anticipation of PEA funding and will move from a 5 hour day to a 6 hour day that will include lunch and rest time. 9:15am- 3:15pm

**Inclusion** Our 3 inclusion programs are filled with 10 general education students (tuition paying) and 5 Special Education students (PSD). These classes will remain on a 2 ½ hour schedule as we await the PEA funding.

# OCTOBER

Upon receipt of the PEA funding in October here are some things you can expect:

- ❖ Potentially a new teacher and new classroom- BUT still at the Mill Pond school
- ❖ A full day, six-hour program (9:15-3:15)
- ❖ Breakfast and Lunch
- ❖ Daily Naptime
- ❖ Still includes bussing or related services
- ❖ Case Manager will need to amend some IEP's to reflect change in program for students going from PSD to Inclusion.
- ❖ Mill Pond Early Learning Center (PreK-K)
  - Helps to bridge the gap between Pre-K and Kindergarten
  - Easier transition to Kindergarten

# TRANSITION

If your child has to switch teachers once we are awarded the PEA funding. We have a full transition plan in place to support them:

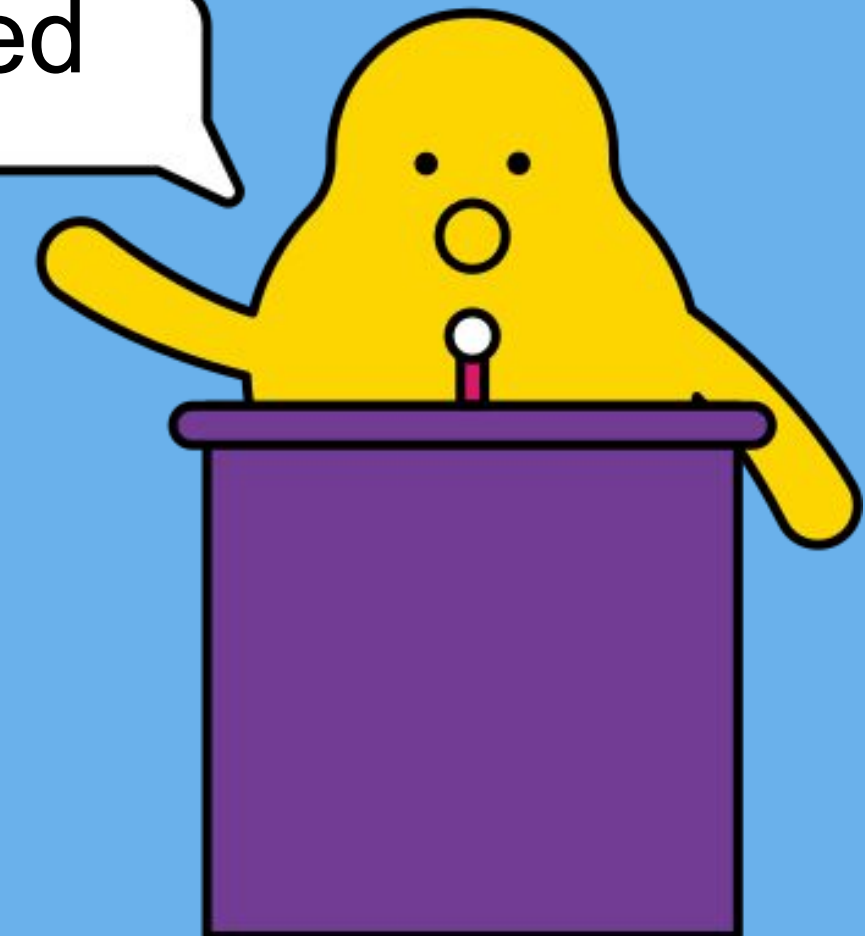
- Your child's new teacher will push in to the current classrooms and get to know students
- Our team will send home a note with a picture of their new teacher as well as a social story to help students understand this change
- We will do our best to keep some peers from each class together.
- Our classroom environment and programming will be consistent making this change easier for students and families.

- Room Setup
- Communication
- Curriculum
- Teacher Expectations

# Update on PEA Process:

## Application:

- Application was reviewed by Rutgers NIEER
- Application was submitted to the state on 8/8/23
  - Anticipated date of reward 9/8/23
- Letters were sent home to parents who will be accepted into the program
- Starting the pursuit of anticipated staffing:
  - Teachers
  - Paraprofessionals
  - Preschool Instructional Coach
  - Social Worker/CPIS
  - PIRT





# PEA Update Continued:

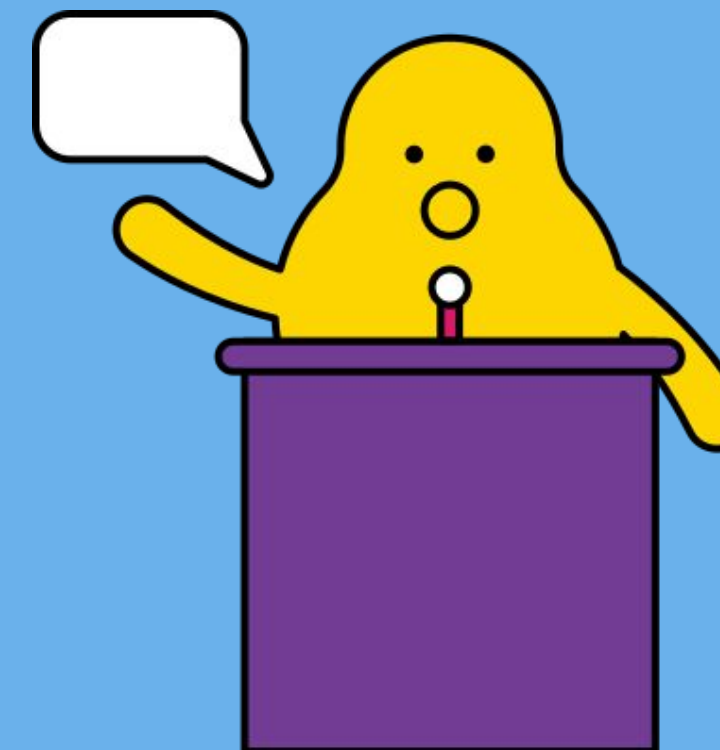
- **Facilities:**

- Classroom sinks have been ordered
- Fencing for playground being installed
- Organization of classrooms/hallways
- Organization of arrival/dismissal procedures

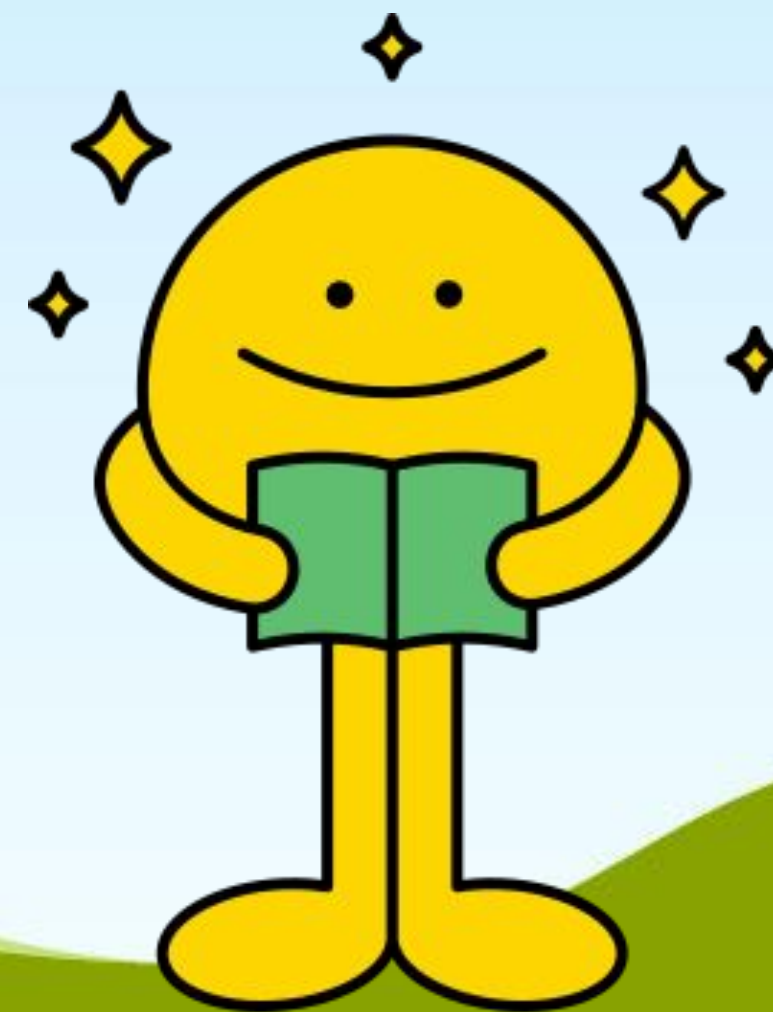
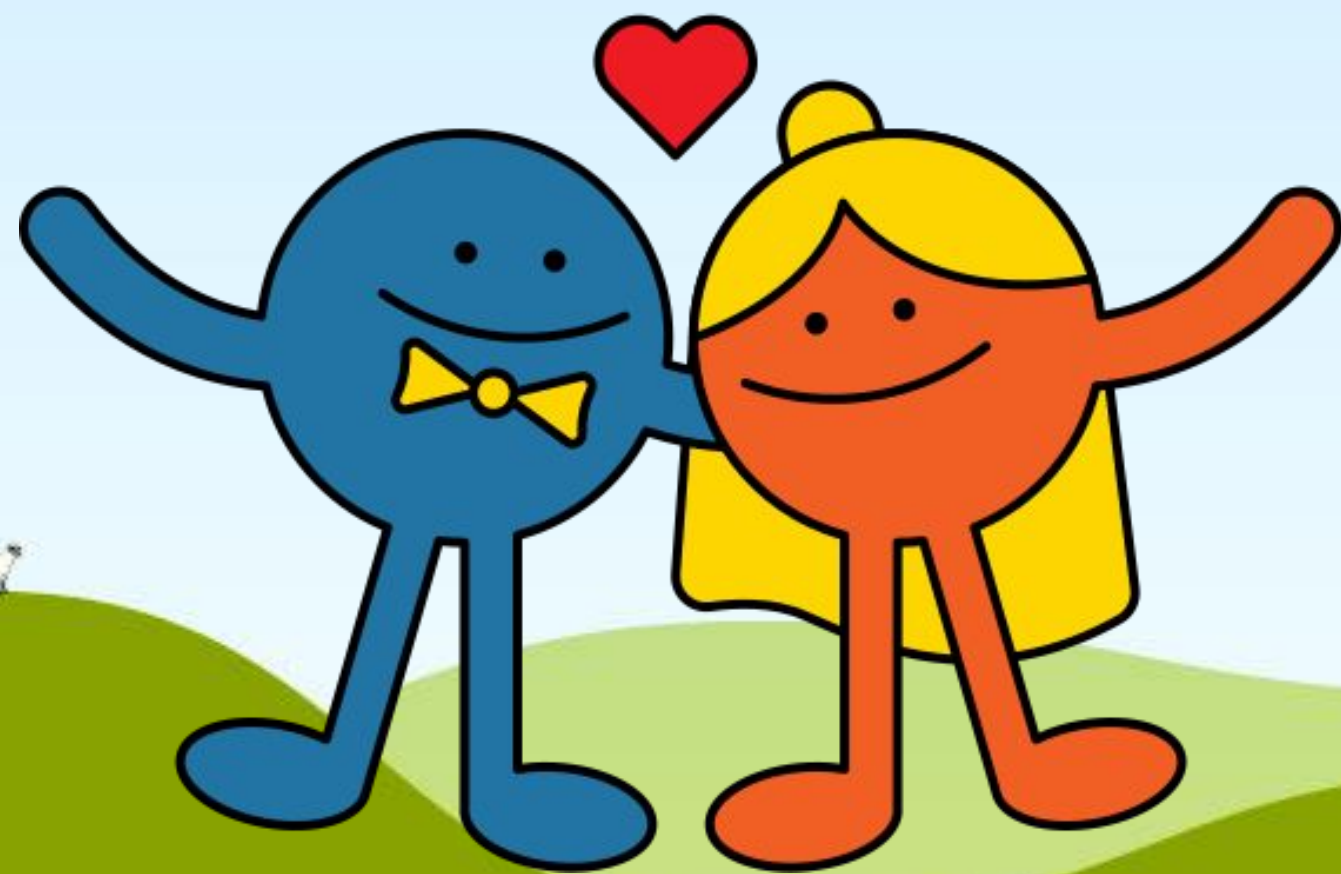


- **Champions:**

- Champions Before & After Care will be offered to preschool students at MPS.
- 10:1 ratio of staff to students



**QUESTIONS??**





# Thank you for attending our Preschool Information Night

If you have additional questions please  
feel free to email us:



[wzylinski@laceyschools.org](mailto:wzylinski@laceyschools.org)

[mamos@laceyschools.org](mailto:mamos@laceyschools.org)

[mkrakovsky@laceyschools.org](mailto:mkrakovsky@laceyschools.org)

